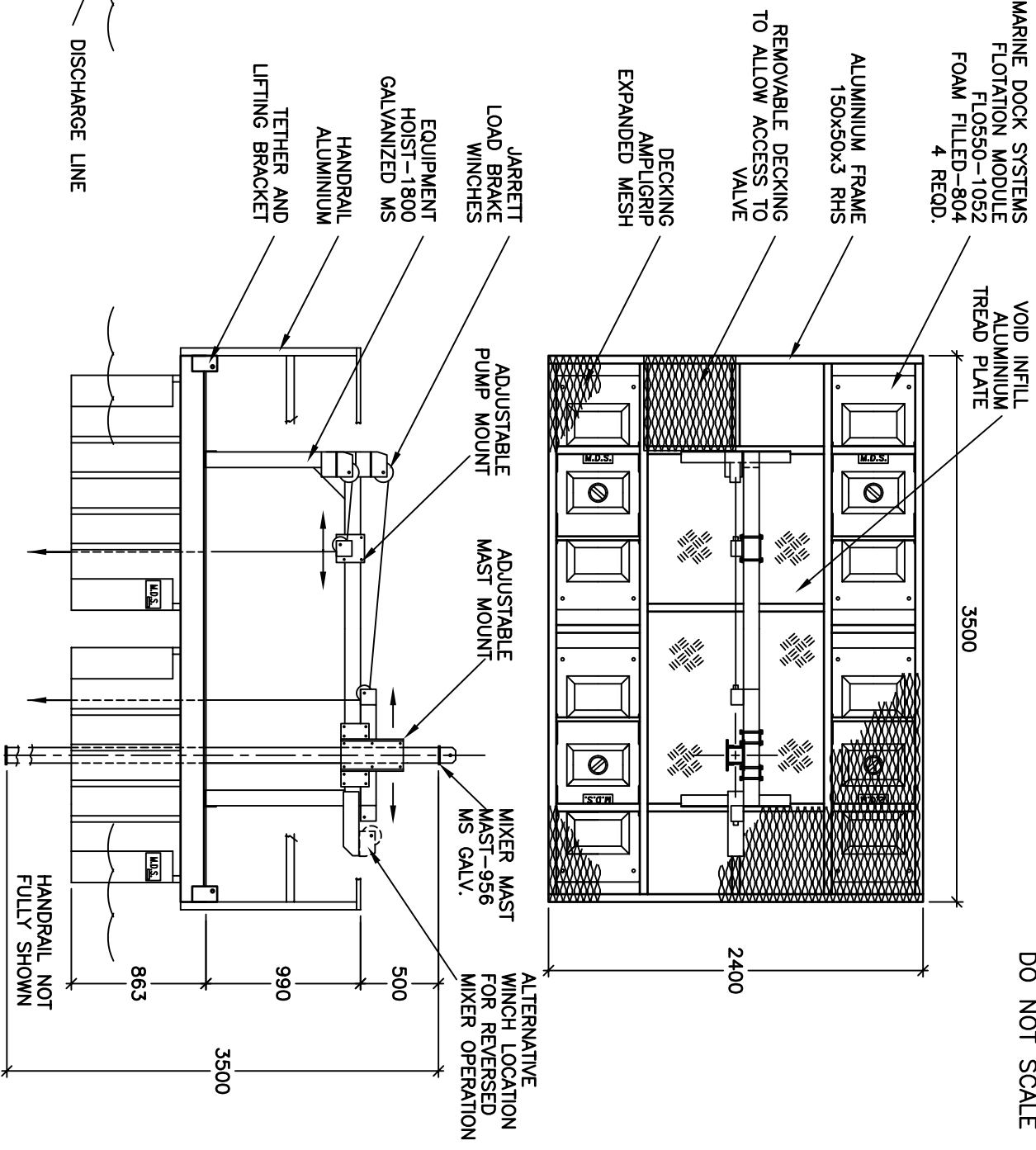
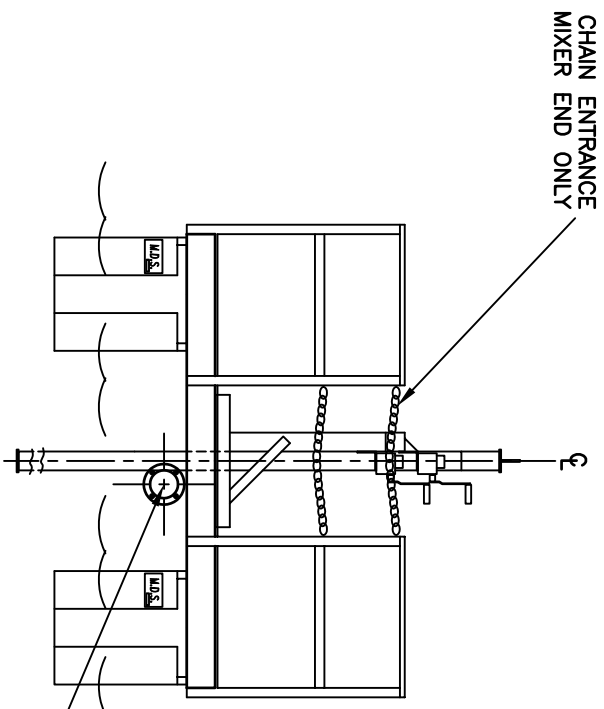


COPYRIGHT ALL RIGHTS RESERVED

DO NOT SCALE

- NOTE-ALL ALUMINIUM EXTRUSIONS ARE OF GRADE 6063-T5 OR EQUIVALENT.
- ALL STRUCTURE IS FULLY WELDED WITH A NOMINAL FILLET OF 5mm.
  - FILLER ALLOY IS GRADE 5356.
  - EQUIPMENT HOIST AND MIXER MAST IS HOT DIP GALVANIZED.
  - ALL FASTENERS ARE STAINLESS STEEL
  - DECKING IS AMPLIGRIP 201 SERIES.
  - PONTOON FRAME AND EQUIPMENT HOIST IS INSULATED WITH 3mm INSERTION RUBBER.
  - FLOTATION MODULES ARE MARINE DOCK SYSTEMS 550L. POLYETHYLENE MODULE WITH POLYURETHANE FOAM FILLING.



**MARINE DOCK SYSTEMS**  
**PTY LTD**

**SLUDGE POND**  
**PONTOON**

**PONTOON-1810**



SCALE	N.T.S.	DWG	<b>A4-1810</b>	
DRAWN	J.P.M	REV	A	7,12,98
DATE	7,12,98	CHK		App'D